

XCI-NPR

ANPR Module for Access Control



The Sony XCI-NPR Camera breaks the technology barrier between Access Control and Automatic Number Plate Recognition, with an open door to CCTV, thus creating a link of added value like no other.

Sony continues to be on the edge of techno-communication with a highly integrated automatic number plate recognition (ANPR) camera that is the first to provide easy integration with existing access control systems. The Sony XCI-NPR uses the industry-standard Wiegand protocol, allowing, for example, manufacturers of Access Control Systems to quickly and cost-effectively add ANPR capability to their product lines.

Aimed primarily at applications within the corporate parking sector, the XCI-NPR is available as an OEM solution designed to transform an existing badge-reader type access control solution into a seamlessly integrated ANPR system that offers dramatically improved ease-of-use. It includes all of the hardware, software and interfaces that are required to integrate with bespoke or standard access control systems, eliminating the need for additional access control software and time-consuming systems integration effort.

The XCI-NPR integrates a Sony SmartCamera loaded with ANPR software, infra-red illumination source, lens and power supply unit, into a standard IP66-rated CCTV housing. Able to recognise number plates from up to 25 European countries, at a range of 4m to 16m, the XCI-NPR includes Ethernet, Serial and Wiegand interfaces that are commonly used in access control systems. It is designed for simple set-up, deployment and maintenance. Intended for 24/7 free-run recognition with no external trigger, the module provides wrong plate detection and notification. A browser-based utility is supplied for both initial configuration and on-going management while programmable relays and images of vehicles are available for CCTV integration.

Features

Standalone solution

- Embedded ANPR software (up to 99% reliability)
- Working day & night
- Embedded scheduler

Access Control Design

- Wiegand output
- Dirty/damaged licence plate notification
- Low speed vehicles: up to 15km/h max

All in one solution

- Ideal solution for Access Control, all-included: Housing, SmartCamera, Lens, Infrared illuminator, Power supply unit, Wiegand interface
- Up to 25 European countries; for more information, please contact us at zone@eu.sony.com

Range: 4m to 16m

Various interfaces

- Wiegand 26 bits
- Wiegand 37 bits
- RS232
- Ethernet 10-100MB

Easy to use / Easy to install

- Web interface management
- Zero software installation
- Included power supply: 115Vac to 230Vac

CCTV integration features

- 2 programmable relays (for camera control, alarm, light, barrier...)
- Images (640x480) and string of the license plate are available on Ethernet output

SONY

vision like.no.other™

Specifications

Technical Features

Camera Features

Image device	1/3-type progressive scan IT monochrome CCD
Effective resolution (H x V)	640 x 480 (VGA)
Cell size (H x V)	7.4 x 7.4 μ m
Frame rate	Up to 60 fps (VGA)
Electronic shutter	1/60s to 1/10,000s (trigger mode)

Processor

CPU	X86, AMD Geode GX533, 400MHz
Operating System	Monta Vista Linux Professional edition 3.0

Interfaces

Wiegand	26 bits, 37 bits
Serial interface	RS-232C
Ethernet	100Base-TX/10Base-T (Network protocols: TCP/IP (IPv4), HTTP, FTP)
Monitor output	D-sub 15pin for multi scan monitor
USB	Version 1.1
Digital I/Os	2 x Relays

Power requirements

Voltage range	115VAC to 230VAC
Protection Overload	110 ~180% rated output power. Protection type: Hiccup mode, recovers automatically after fault condition is removed
Power consumption	Typical: 7.5W Maximal (including heater): 58W

General

Range	4 to 16m
Infrared Lens	C-mount; Manual Zoom/Iris/Focus; 10-40mm
Infrared Light	850 nm
Minimum illumination	1 lx (F1.4, +18 dB gain)
Operating temperature	-20 to +50 °C (-4 to +122 °F)
Storage temperature	-30 to +60 °C (-22 to +140 °F)
Operating humidity	20 to 80% non condensing
Weight	3.2 kg (3.65 kg with sunshield)
Dimensions (W x H x D)	163 x 115 x 412 mm
Dimensions with sunshield	176 x 131 x 514 mm
Regulation	EMC EN61000-1, EN61000-3

Housing

IP66 according to EN 60529 with cable glands

Die-cast aluminium

Sunshield in ABS

Epoxypolyester powder painted colour RAL9002

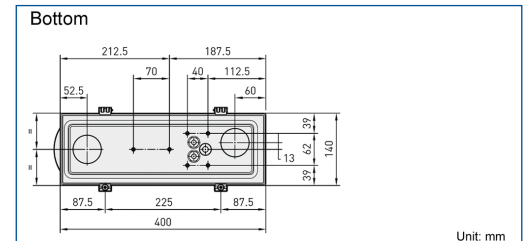
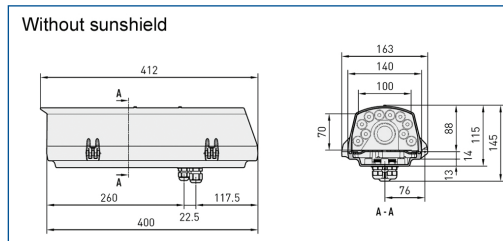
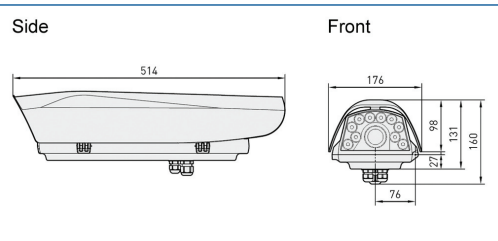
Stainless steel external screws

3 removable cable glands: 2xPG9 and 1xPG11

Heater Ton 15°C +/- 3°C (59°F +/- 5°F) Toff 22°C +/- 3°C (71°F +/- 5°F), consumption 40W max

Software Features

Country	25 countries; for more information, please contact us at zone@eu.sony.com
Setup	Web interface managed (login and password protection)
ANPR Software	Proprietary Number Plate Recognition Software
Analysis	Optimal technology combining the 3 analysis methods: Statistical, Neuronal, Optical
Bad/Dirty Licence Plate	Programmable unique identifier sent when bad licence plate is detected
Speed	Low speed vehicles (Access Control design) - up to 15 km/h (6fps)
Interfaces	SDK for easy CCTV integration & SDK for easy Access Control integration
Data transmission	Ethernet (10/100 MB/s), Wiegand 26 and 37 bits, RS232
Scheduler	Programmable scheduler
Images	640 x 480 JPG image available through TCP/IP



Unit: mm

Dealer Stamp